



Fresh Air,  
everywhere...

# VENTILATION

## EXHAUST FANS - PVC

ORDERING CODE	PART NO	DESCRIPTION	STD. PACKING	MOQ	PRICE (US \$)	PRICE (Aed)
	RXT-15R	EXHAUST FAN - PVC 6" ROUND - WHITE	10	100	9.58	35.19
	RXT-20R	EXHAUST FAN - PVC 8" ROUND - WHITE	10	100	13.61	50.00
	RXT-15MS	EXHAUST FAN - 6" SQUARE WITH METAL HOUSING 220V-50Hz-1850 RPM	1	100	16.13	59.26
	RXT-20MS	8" SQUARE PP EXHAUST FAN WITH METAL HOUSING 220V-50Hz-1350 RPM	1	100	24.73	90.87
	RXT-25MS	EXHAUST FAN SQUARE 10" WITH METAL HOUSING - PLASTIC WHITE	1	100	28.66	105.30
	RXT-30MS	EXHAUST FAN SQUARE 12" WITH METAL HOUSING - PLASTIC WHITE	1	100	42.68	156.80
	RXT-20MS/G	EXHAUST FAN SQUARE 8" WITH METAL HOUSING AND GRILL - PLASTIC WHITE	1	100	36.63	134.59
	RXT-25MS/G	EXHAUST FAN SQUARE 10" WITH METAL HOUSING AND GRILL - PLASTIC WHITE	1	100	40.87	150.14
	RXT-15S	EXHAUST FAN SQUARE 6" PLASTIC - WHITE	1	100	14.03	51.54
	RXT-20S	EXHAUST FAN SQUARE 8" PLASTIC - WHITE	1	100	17.64	64.81
	RXT-25S	EXHAUST FAN SQUARE 10" PLASTIC - WHITE	1	100	21.17	77.78
	RXT-30S	EXHAUST FAN SQUARE 12" PLASTIC - WHITE	1	100	38.75	142.35
	RXT-15S/G	EXHAUST FAN SQUARE 6" WITH GRILL PLASTIC - WHITE	1	100	31.36	115.23
	RXT-20S/G	EXHAUST FAN SQUARE 8" WITH GRILL PLASTIC - WHITE	1	100	36.40	133.74
	RXT-25S/G	EXHAUST FAN SQUARE 10" WITH GRILL PLASTIC - WHITE	1	100	37.80	138.89
	RXT-30S/G	EXHAUST FAN SQUARE 12" WITH GRILL PLASTIC - WHITE	1	100	42.00	154.32



RXT-15R

RXT-20R

*Cleanair*



RXT-15MS

RXT-20MS



## EXHAUST FANS - METAL

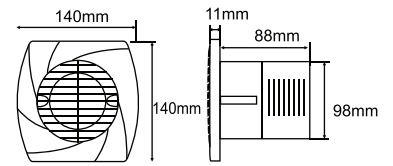
ORDERING CODE	PART NO	DESCRIPTION	STD. PACKING	MOQ	PRICE (US \$)	PRICE (Aed)
	RXTHD225/4/1	EXHAUST FAN METAL 9" 1400 RPM - HEAVY DUTY	1	100	46.58	171.15
	RXTHD300/4/1	EXHAUST FAN METAL 12" 1400 RPM - HEAVY DUTY	1	100	53.93	198.15
	RXTHD380/4/1	EXHAUST FAN METAL 15" 1400 RPM - HEAVY DUTY	1	100	83.36	306.26
	RXTHD450/4/1	EXHAUST FAN METAL 18" 1400 RPM - HEAVY DUTY	1	100	112.78	414.35
	RXTHD600/4/1	EXHAUST FAN METAL 24" 900 RPM - HEAVY DUTY	1	100	216.74	796.30

**GRID-4**



**4" VENTILATION FAN**

- Super silent exhaust fan
- Removable front for easy cleaning
- Design for glass, walls & false ceilings
- Low noise level
- Screw less installation system
- Higher suction



**SPECIFICATIONS**

Code	Model Name	Volts/Hz	Watts	RPM	Air Flow (m3/hr)	Noise Level (db)	Outlet (mm)
R21257-4	GRID-4	220-240/50	15	2450	82	33	100

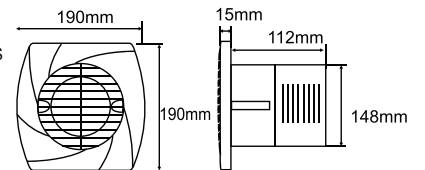
ORDERING CODE	PART NO	DESCRIPTION	STD. PACKING	MOQ	PRICE (US \$)	PRICE (Aed)
	R21257-4	4" VENTILATION FAN - GRID-4	1	100	-	-

**GRID-6**



**6" VENTILATION FAN**

- Super silent exhaust fan
- Removable front for easy cleaning
- Design for glass, walls & false ceilings
- Low noise level
- Screw less installation system
- Higher suction



**SPECIFICATIONS**

Code	Model Name	Volts/Hz	Watts	RPM	Air Flow (m3/hr)	Noise Level (db)	Outlet (mm)
R21257-6	GRID-6	220-240/50	25	2050	310	37	150

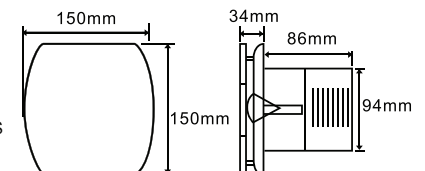
ORDERING CODE	PART NO	DESCRIPTION	STD. PACKING	MOQ	PRICE (US \$)	PRICE (Aed)
	R21257-6	6" VENTILATION FAN - GRID-6	1	100	-	-

**PEARL(I)-4**



**4" VENTILATION FAN**

- Super silent exhaust fan
- Removable front for easy cleaning
- Design for glass, walls & false ceilings
- Low noise level
- Screw less installation system
- Higher suction
- Fully cover front panel



**SPECIFICATIONS**

Code	Model Name	Volts/Hz	Watts	RPM	Air Flow (m3/hr)	Noise Level (db)	Outlet (mm)
R21277-4	PEARL(I)-4	220-240/50	15	2450	80	33	100

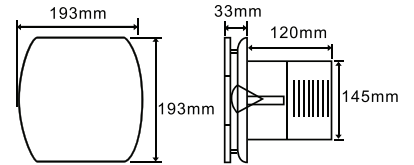
ORDERING CODE	PART NO	DESCRIPTION	STD. PACKING	MOQ	PRICE (US \$)	PRICE (Aed)
	R21277-4	4" VENTILATION FAN - PEARL(I)-4	1	100	-	-

**PEARL(I)-6**



**6" VENTILATION FAN**

- Super silent exhaust fan
- Removable front for easy cleaning
- Design for glass, walls & false ceilings
- Low noise level
- Screw less installation system
- Higher suction
- Fully cover front panel



**SPECIFICATIONS**

Code	Model Name	Volts/Hz	Watts	RPM	Air Flow (m3/hr)	Noise Level (db)	Outlet (mm)
R21277-6	PEARL(I)-6	220-240/50	25	2050	310	37	150

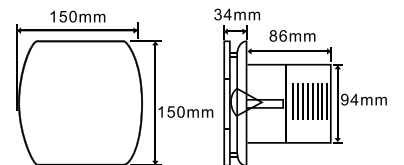
ORDERING CODE	PART NO	DESCRIPTION	STD. PACKING	MOQ	PRICE (US \$)	PRICE (Aed)
	R21277-6	6" VENTILATION FAN - PEARL(I)-6	1	100	-	-

**PEARL(W)-4**



**4" VENTILATION FAN**

- Super silent exhaust fan
- Removable front for easy cleaning
- Design for glass, walls & false ceilings
- Low noise level
- Screw less installation system
- Higher suction
- Fully cover front panel



**SPECIFICATIONS**

Code	Model Name	Volts/Hz	Watts	RPM	Air Flow (m3/hr)	Noise Level (db)	Outlet (mm)
R21267-4	PEARL(W)-4	220-240/50	15	2450	80	33	100

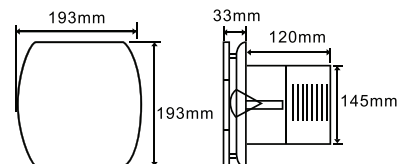
ORDERING CODE	PART NO	DESCRIPTION	STD. PACKING	MOQ	PRICE (US \$)	PRICE (Aed)
	R21267-4	4" VENTILATION FAN - PEARL(W)-4	1	100	-	-

**PEARL(W)-6**



**6" VENTILATION FAN**

- Super silent exhaust fan
- Removable front for easy cleaning
- Design for glass, walls & false ceilings
- Low noise level
- Screw less installation system
- Higher suction
- Fully cover front panel



**SPECIFICATIONS**

Code	Model Name	Volts/Hz	Watts	RPM	Air Flow (m3/hr)	Noise Level (db)	Outlet (mm)
R21267-6	PEARL(W)-6	220-240/50	25	2050	300	37	150

ORDERING CODE	PART NO	DESCRIPTION	STD. PACKING	MOQ	PRICE (US \$)	PRICE (Aed)
	R21267-6	6" VENTILATION FAN - PEARL(W)-6	1	100	-	-