



FLOOR
BOXES

FLOOR BOXES



UNDER FLOOR - SERVICE OUTLET BOX



- Overall depth 56mm for 25mm trunking
- Overall depth 75mm for 38mm trunking
- Standard Finish: Epoxy Powder Coated
- Pre-Galvanised sheet complies to BS EN 10143 : 1993, BS 1004 :1985 Zinc Alloy for Die Casting

Service Outlet Boxes are specially designed to segregate cable for power, Telephone and Computer circuits. The service boxes are provided with service outlet plates that mounted to the necessary outlet. The type and number of sockets can be tailor made to the customer's requirement.

Service Box consists of three components:

Box Base Frame

Flyover Bridge

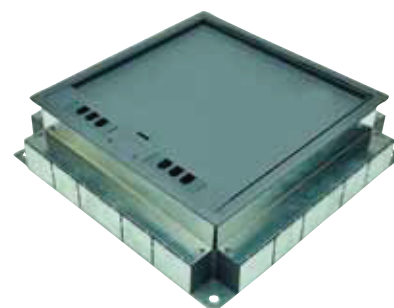
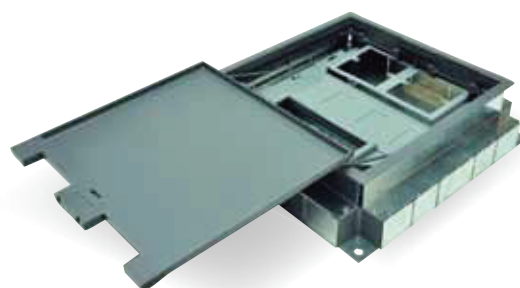
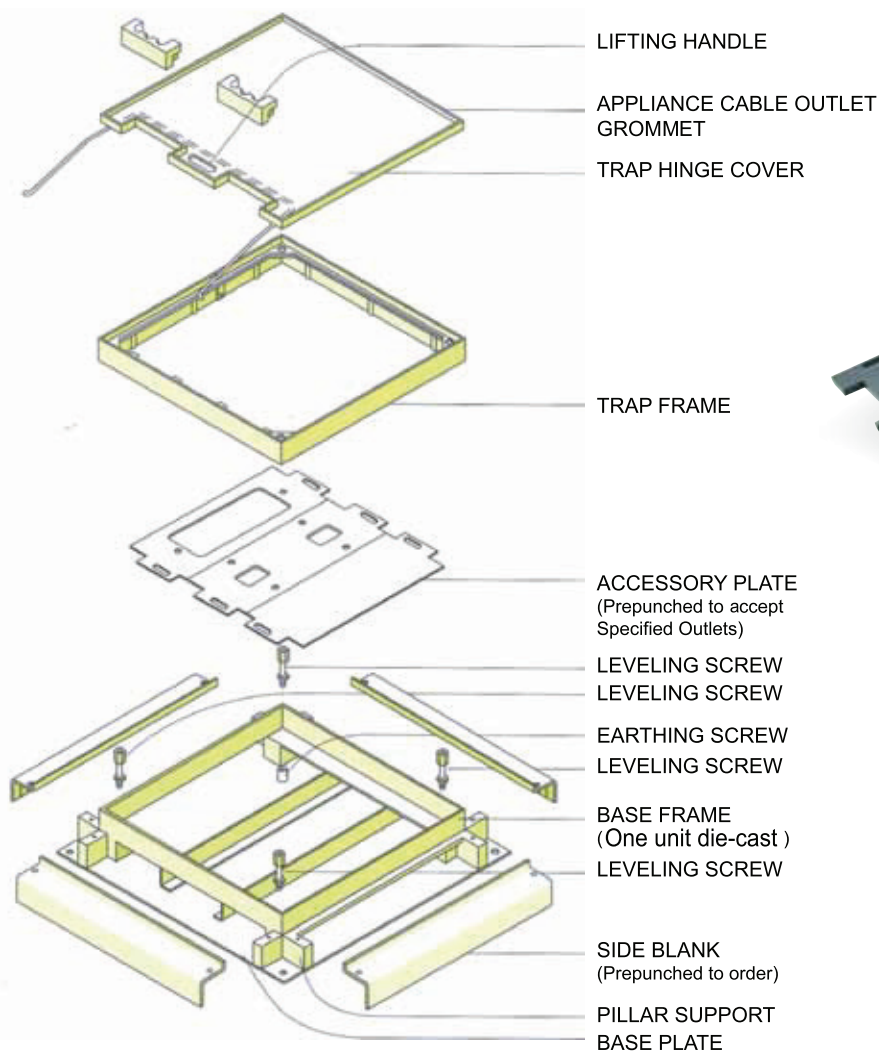
Trap and Frame

The Box frame, Trap Frame and Outlet Panel are made of hot dipped galvanised steel sheet that conform to BS 2989. Trap and Frame and Outlet panels are powder coated to provide a good finish and protection to visible parts. The side plates for the box base are designed to be used for trunking and conduit entries, recessed 9mm to enable it to accept carpet or tile floor finishes

The The Service outlet Box comes complete with conduit knockout plates and trunking entry plates. It can be used as a through terminal or conduit outlet module.

UNDER FLOOR - SERVICE OUTLET BOX

Exploded View



PRODUCT CODE	SPECIFICATIONS
RUFBS250/250/3	Under floor service outlet box 250x250x75/90, 3 compartments
RUFBS300/300/3	Under floor service outlet box 300x300x75/90, 3 compartments
RUF13ADSP	Dual Socket Plate for Under Floor service outlet box 13 Amp
RUF13ASSP	Dual Single Socket Plate for Under Floor service outlet box 13 Amp
RUFDSP	Data Socket Plate for Under Floor service outlet box
RUFDSP/RJ45	Data Socket Plate for 4 RJ45 fo Under Floor service outlet box
RUFBP	Blank Plate for Under Floor service outlet box



FLOOR BOXES

UNDER FLOOR - JUNCTION BOX

The junction box comes complete with 4 conduit Knockout Plates. It can be used as a Terminal, Through, Bend, Tee, Fourway or Conduit box. Flyover is also supplied.

- Adjustable upwards by 15mm
- Overall depth 56mm for 25mm trunking
- Overall depth 75mm for 38mm trunking
- Lid recess 6mm and 9mm for carpet or vinyl tile finishes.

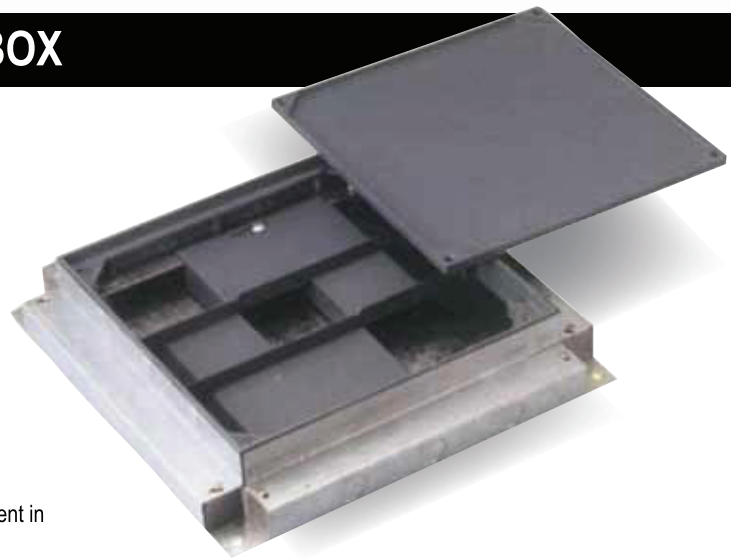
Junction Boxes are specially designed to facilitate cabling management in high rise buildings. Junction Boxes consists of three main features:

BOX BASE | **FRAME FLYOVER BRIDGE** | **TRAP AND FRAME**

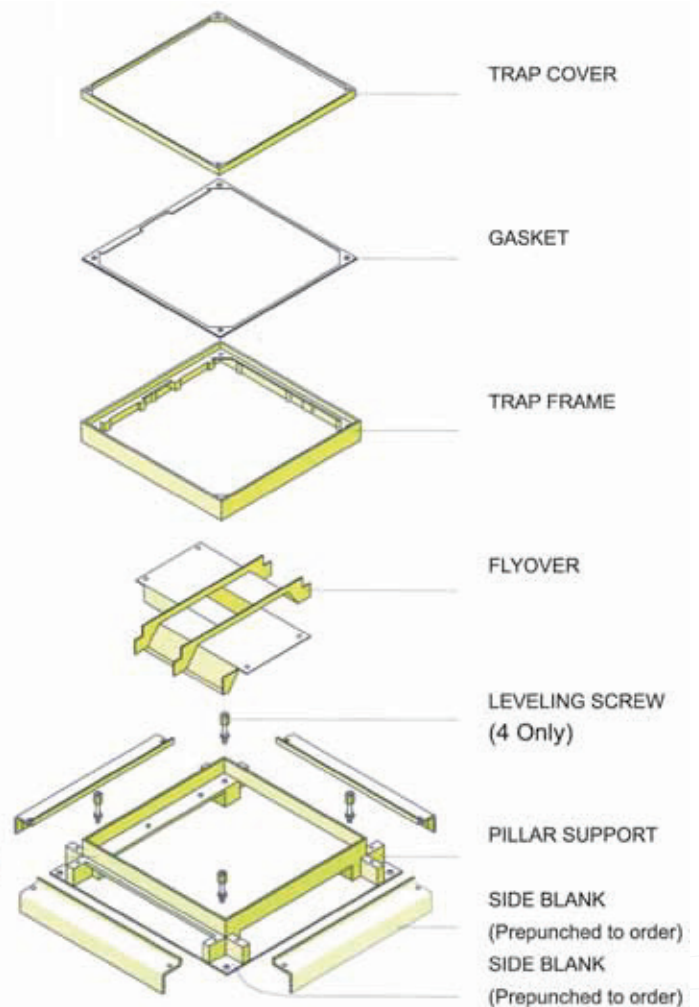
the box frame is made of high pressure die-cast zinc alloy, a non-ferrous and rust proof material.

The flyover bridge can be fabricated from ABS plastic or electro galvanised steel with powder coating to give it a good finish. The flyover bridge which is used to segregate all the service cables can be supplied in two or three compartments.

The trap and frame are made of high pressure die-cast zinc alloy and powder coated to further enhance the rust resistance and good appearance. The trap and frame are secured by countersunk stainless steel screws, recessed 9mm to enable it to accept carpet or vinyl tile finishes.



Exploded View



38mm HEIGHT

PRODUCT CODE	SPECIFICATIONS
RUFJBG250/250/90/3	Junction box 250x250x75/90 , 3 compartments
RUFJBG300/300/90/3	Junction box 300x300x75/90, 3 compartments