

LED

STREET LIGHTS



PHOENIX

Architectural LED Area Light, Highly efficient lensed
optical system



LED

STREET LIGHTS

PHOENIX



Available in:

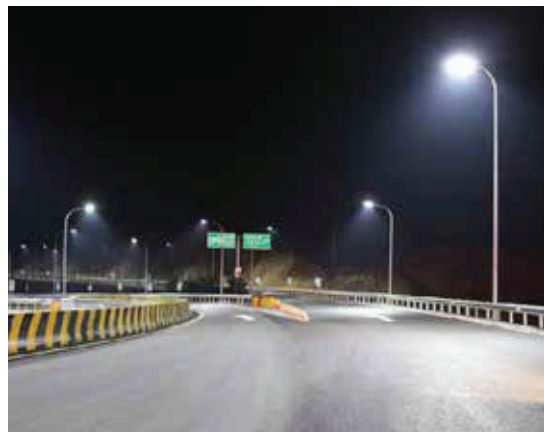
Features & Benefits



- Die cast aluminium body powder painted UNI EN 1706
- Tempered glass 5 mm
- Expanded silicone
- Fix non-dimmable (basic version)
- Automatic dimming (virtual midnight) with default profile

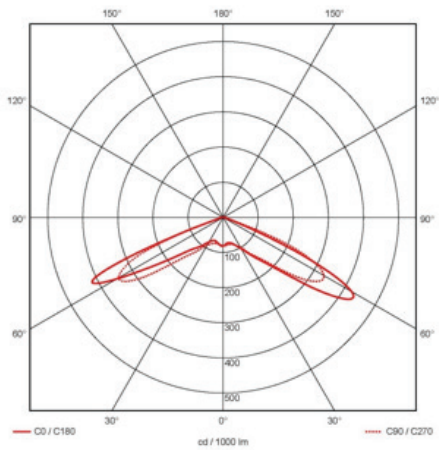
APPLICATIONS:

Urban expressway, trunk road, secondary roads, slip roads, factories, schools, gardens, squares, courtyards, parking lots etc.

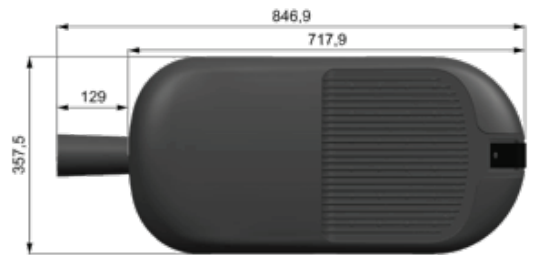




Light Distribution Curve



Dimension Diagram



Specification

Ordering Code	Part Code	Description	Watts (W)	CRI	CCT* (K)	Input Voltage (VAC)	Frequency (Hz)	PF	LM/W	Lumens (lm)	Life (hrs)	Std Pack	Power Factor	Operating Temperature Range	Operating Humidity Range	IP Rating
RSLSH-89	R5017465-89	Die cast Aluminium Street Light / LED	89	70	3500/4000/6500	220-240	50-60	0.95	130-150	12000	100,000	1	0.95	-40 ⁰ c - 50 ⁰ c	10%-90%RH	IP66
RSLSH-120	R5017465-120	Die cast Aluminium Street Light / LED	120	70	3500/4000/6500	220-240	50-60	0.95	130-150	18000	100,000	1	0.95	-40 ⁰ c - 50 ⁰ c	10%-90%RH	IP66
RP1-140	500148011465001	Die cast Aluminium Street Light / LED	140	70	3500/4000/6500	220-240	50-60	0.95	130-150	21000	100,000	1	0.95	-40 ⁰ c - 50 ⁰ c	10%-90%RH	IP66
RP1-160	500148011665001	Die cast Aluminium Street Light / LED	165	70	3500/4000/6500	220-240	50-60	0.95	130-150	24000	100,000	1	0.95	-40 ⁰ c - 50 ⁰ c	10%-90%RH	IP66