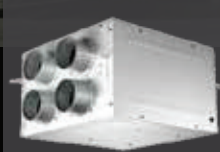


VENTILATION

INLINE

FANS &
BLOWERS



VF-MV Mix Flow Inline Blower

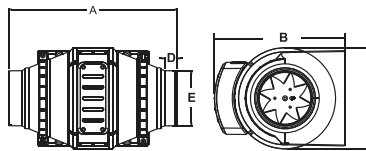
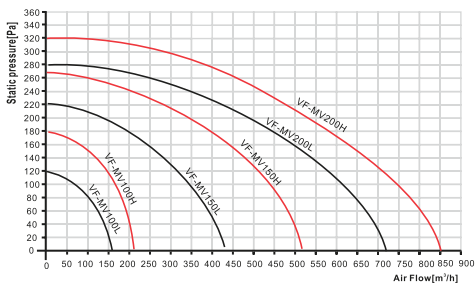


Features:

The MV series is a mixed flow in line exhaust fan in various sizes. Specially designed for installing ventilation systems with high pressure, strong airflow and low noise levels, And such as the case of suspended ceilings. Energy Saving motor with ball bearing for long life operation. It comes in a 2 speed configuration. Removable body, for repair or cleaning, without the need to touch the ducts. The fans are powerful enough to vent multiple areas with one unit for today's larger bathrooms; venting multiple bathrooms with one unit is also possible. The unit feature allows peace and quiet in the living space, thus reducing the sound level of a generally noisy fan.

Specification

Model	Rating Voltage (V)	Input (W)	Air Flow (m³/h)	Nose (dB)	Size (mm)
MV100	220-240	30	220	41	97
MV125	220-240				
MV150	220-240	50	530	45	145
MV200	220-240				



Dimensions (mm)

Model	A	B	C	D	E
MV100	297	234	177	22	97
MV125					
MV150	307	256	200	78	145
MV200					

VF-IF Axial Inline Fan

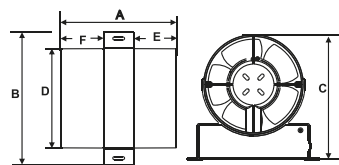
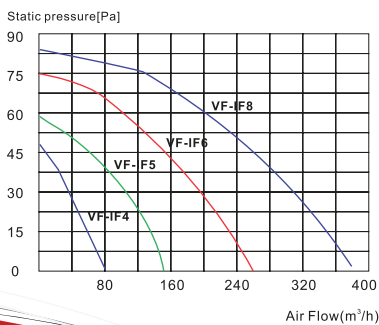


Features:

- Can choose gravity shutters or fix shutters to vent through flexible pipe.
- Can choose light lamp holder with vent outlet 2-in-1 set.

Specification

Model	Rating Voltage (V)	Input (W)	Air Flow (m³/h)	Nose (dB)	Size (mm)
VF-IF4	220-240	15	80	39	100
VF-IF5	220-240	20	150	40	120
VF-IF6	220-240	25	250	42	150
VF-IF8	220-240	35	370	45	200



Dimensions (mm)

Model	A	B	C	D	E	F
VF-IF4	125	160	138	98	29	60
VF-IF5						
VF-IF6	172	197	185	147	64	64
VF-IF8						

VF-TD Mix Flow Silence Blower



Features:

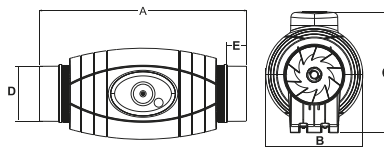
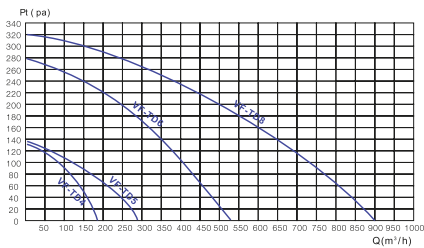
The model offer solutions to ventilation problems, especially in places where people work and low sound level is required. Low profile Mixflow fans with soundabsorbent insulation. Extremely Quiet. Manufactured in plastic material, with a specifically designed internal skin to direct the sound waves in the right angle for them to be captured by the sound absorbent material. Safety thermal overload protection.

Specification

Model	Rating Voltage (V)	Input (W)	Air Flow (m³/h)	Nose (dB)	Size (mm)
VF-TD4	220-240	32	175	24	100
VF-TD5	220-240	32	280	20	125
VF-TD6	220-240	55	480	22	150
VF-TD8	220-240	100	840	20	200

Dimensions (mm)

Model	A	B	C	D	E
VF-TD4	579	204	255	97	28
VF-TD5	462	204	255	123	42
VF-TD6	486	221	276	146	42
VF-TD8	569	265	330	199	42



VF-IC Mix Flow Inline Mini-Blowers



Specification

Model	Rating Voltage (V)	Input (W)	Air Flow (m³/h)	Nose (dB)	Size (mm)
VF-IC4(L/H)	220-240	20/25	150/190	28/35	100
VF-IC5(L/H)	220-240	25/30	220/280	29/36	125
VF-IC6(L/H)	220-240	65/80	330/460	33/44	150
VF-IC7(L/H)	220-240	65/80	510/600	33/44	160
VF-IC8(L/H)	220-240	105/130	700/820	45/52	200
VF-IC10(L/H)	220-240				
VF-IC12(L/H)	220-240				

Dimensions (mm)

Model	A	B	C	D	E
VF-IC4(L/H)	96	246	190	140	167
VF-IC5(L/H)	123	246	190	140	167
VF-IC6(L/H)	146	295	259	195	233
VF-IC7(L/H)	158	295	261	209	239
VF-IC8(L/H)	199	295	261	209	239
VF-IC10(L/H)	247	383	323	257	281
VF-IC12(L/H)	310	445	408	323	362

