

LIGHTING

EMERGENCY & EXIT LIGHTS





EXIT LIGHTS



RXT-5123



RXT-5123-R



RXT-5123R



RXT-5123-LR

ORDERING CODE	PART NO	DESCRIPTION	STD. PACKING	MOQ	PRICE (US \$)	PRICE (Aed)
	RXT-5111	EXIT SIGNAGE LED/8 PIECES WITH BACKUP	1	100	29.69	109.09
	RXT-5123	EXIT SIGNAGE LED/4 PIECES 1.5 HRS BACKUP	1	100	16.33	60.00
	RXT-5123R (ARROW)	EXIT SIGNAGE LED/4 PIECE/RIGHT ARROW 1.5 HRS BACKUP	1	100	16.33	60.00
	RXT-5123-LR	EXIT SIGNAGE LED/4 PIECE/LEFT-RIGHT ARROW 1.5 HRS BACKUP	1	100	16.33	60.00
	RXT-5123-R	EXIT SIGNAGE LED/4 PIECE/RIGHT ARROW 1.5 HRS BACKUP	1	100	16.33	60.00
	RXT-5006	EXIT SIGNAGE LED/ 6 PIECES WITH BACKUP				
	ESA08-3H-AT-MH					
	ESA09-3H-AT-MH					
	ESA10-3H-AT-MH					
	ESA11-3H-AT-MH					
	ESA12-3H-AT-MH					



ESA08-3H-AT-MH



ESA09-3H-AT-MH



ESA10-3H-AT-MH



ESA11-3H-AT-MH



ESA12-3H-AT-MH



RXT-5111

Features

- LED Exit surface/suspended light
- LED Green light
- Plastic housing
- 220-240 VAC 50/60Hz
- Charging time: 20-24 hours
- Light up time: 1.5 hour
- Non-maintained typewall or ceiling installation
- Dimensions: 330 x 280 x 50 mm



RXT-5006

Features

- 6pcs LED Green light
- 3.6V300mAh rechargeable Ni-Cd battery
- 2 hours Charge time
- Material: plastic
- 220-240 VAC 50/60Hz
- Wall-mounted or ceiling
- Dimensions: 364 x 28x165mm

LEXUS EMERGENCY BULKHEAD



Applications

- Emergency Room Coverage
- Emergency Exits

Features

- Ceiling/Wall Mount • IP65
- 7W Emergency Maintained / Non-Maintained
- 6000K • Complete With Exit & Arrow Legends

ORDERING CODE	PART NO	DESCRIPTION	STD. PACKING	MOQ	PRICE (US \$)	PRICE (Aed)
	LEX-7NW/EM	LEXUS EMERGENCY BULKHEAD 7W 235Lm			-	-

FLUORESCENT EMERGENCY LIGHTS



RXT-108

- 6v 2Ah rechargeable sealed lead-acid battery.
- 1x8w(304.8mm) T5 fluorescent tube.
- Emergency & automatic light-up.
- Overdischarge & overcharge protection.
- Red LED: charge indicator.
- Duration time: 3Hrs.
- Charging time: 13-15Hrs.
- Supply power: 220-240v 50/60Hz.



RXT-118

- 2x4v 1Ah rechargeable sealed lead-acid battery.
- 1x8w(304.8mm) T5 fluorescent tube.
- Rechargeable & automatic light-up.
- Discharge & overcharge protection.
- Test function button.
- Red LED: charge indicator.
- Charging time: 13-15Hrs.
- Duration time: 1.5Hrs.
- Supply power: Ac 220-240v/60Hz.

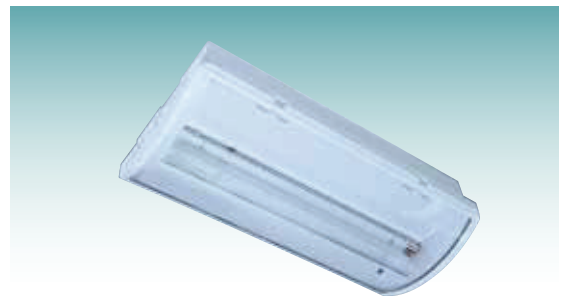
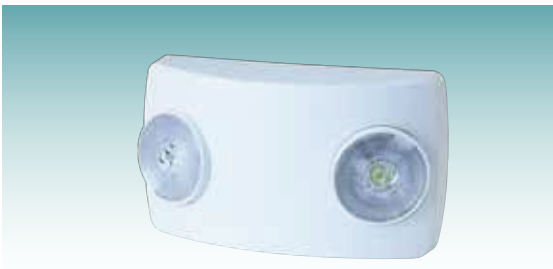
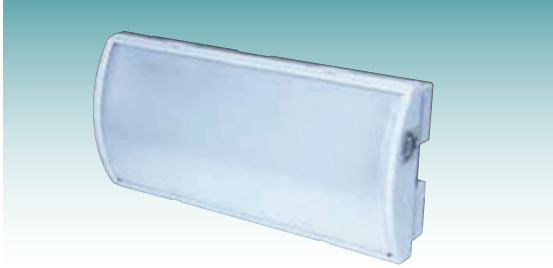


RXT-338

- Special Device for over charge protection control.
- 2X8w(12 inches) T5 fluorescent tube.
- Circuit for extending battery life.
- Discharge protection circuit to avoid fluorescent tube with black end.
- Automatic light-up when power failure.
- 6v 3.2Ah Sealed Lead-Acid Rechargeable Battery.
- Power Source: 220-240v/50-60hz.
- Charging Time: 16 -20Hrs.
- Duration Time: 6Hrs for 1 Tube, 3.5Hrs for 2 Tubes.

ORDERING CODE	PART NO	DESCRIPTION	STD. PACKING	MOQ	PRICE (US \$)	PRICE (Aed)
RXT-108		EMERGENCY LIGHT 1 x 8 W	10	100	22.68	83.33
RXT-118		EMERGENCY LIGHT T5 /1 x 8W 1.5 HOURS BACKUP / RECHARGEABLE	10	100	10.39	38.18
RXT-338		EMERGENCY LIGHT T5 / 2 x 8W 6 HOURS BACKUP / RECHARGEABLE	10	100	20.29	74.54

LED EMERGENCY LIGHTS



ORDERING CODE	PART NO	DESCRIPTION	STD. PACKING	MOQ	PRICE (US \$)	PRICE (Aed)
		EMERGENCY LIGHT				
		EMERGENCY LIGHT				
		EMERGENCY LIGHT				
		EMERGENCY LIGHT				



ORDERING CODE	PART NO	DESCRIPTION	STD. PACKING	MOQ	PRICE (US \$)	PRICE (Aed)
		EMERGENCY LIGHT				
		EMERGENCY LIGHT				