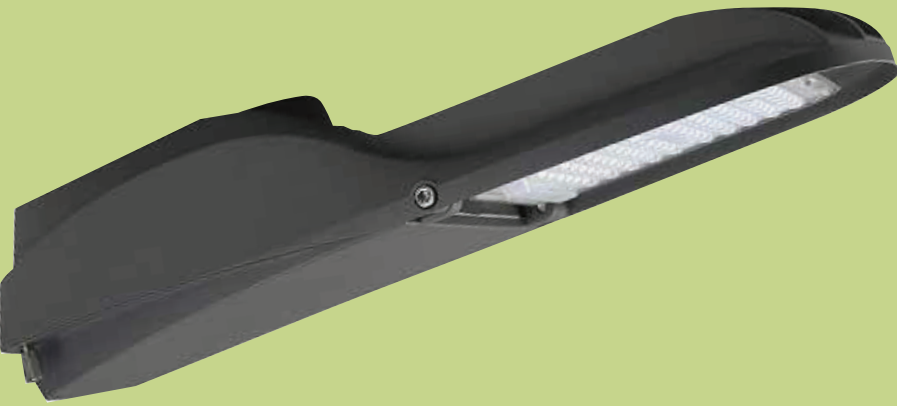


ARROW

Compact and robust ARROW luminaire, which is user friendly and easy to maintain with tool-free design, provides 15 to 100W model options.



ARROW MACRO SERIES



Features & Benefits

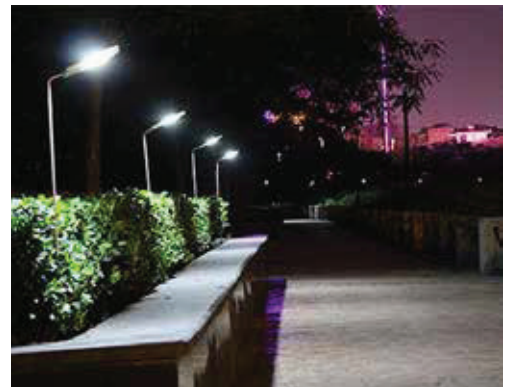
Available in:



- Die cast aluminium body with separate LED module and control gear compartment.
- All control gears mounted on cover that can be detached for maintenance needs.
- RoHS Compliant
- LED module compartment covered by tempered glass IK 08 rating and provided with cooling Fins
- Cree/Philips/Osram/Samsung Chips with High lumen output per watt, high CRI, and CCT of 3000k , 4000k - 6500k or any other kelvin temperature required
- The Gear compartment designed for tool free
- All hardware used within the fixture are stainless steel to with stand corrosion
- Fixture designed to meet safety requirements in line with IEC 60598
- Luminous Efficacy > 130 – 150 Lm/ W
- Front covered by tempered glass
- Luminaire designed for tool free access to allow for ease of maintenance
- Provision
 - Of safety cut off switch when the luminaire is opened for any maintenance purposes
 - Of being compatible with NEMA socket for lighting management control
 - for 0 -10v Dimming
 - Of surge protection device
 - Of spirit level to ensure that the luminaire is mounted horizontal
 - Of pole mounting piece designed for horizontal or vertical mounting
- Certification: ENEC , UL / DLC, CB, CE, IK 08, IP66

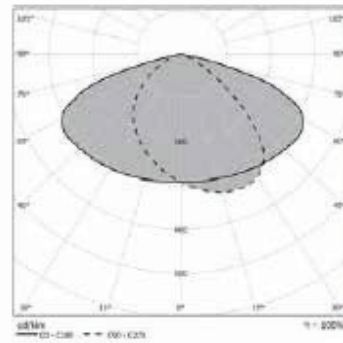
APPLICATIONS:

Public areas - Garden, parking etc.

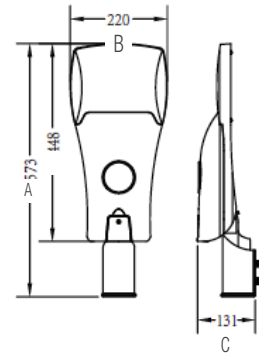




Light Distribution Curve



Dimension Diagram



Specification

3030 LIGHT SOURCE

Ordering Code	Part Code	Description	Watts (W)	CRI	CCT* (K)	Input Voltage (VAC)	Frequency (Hz)	PF	LM/W	Lu-mens (lm)	Life (hrs)	Std Pack	Power Factor	Operating Temperature Range	Operating Humidity Range	IP Rating
RA2-15	500124011540001	Die cast Aluminium Street Light - LED	15	70	3000/4000/6500	100 - 277	50-60	0.95	130-150	2250	100,000	1	0.95	-40 ⁰ c - 50 ⁰ c	10%-90%RH	IP66
RA2-25	500124012540001	Die cast Aluminium Street Light - LED	25	70	3000/4000/6500	100 - 277	50-60	0.95	130-150	3750	100,000	1	0.95	-40 ⁰ c - 50 ⁰ c	10%-90%RH	IP66
RA2-35	500124013540001	Die cast Aluminium Street Light - LED	35	70	3000/4000/6500	100 - 277	50-60	0.95	130-150	5250	100,000	1	0.95	-40 ⁰ c - 50 ⁰ c	10%-90%RH	IP66
RA2-45	500124014540001	Die cast Aluminium Street Light - LED	45	70	3000/4000/6500	100 - 277	50-60	0.95	130-150	6750	100,000	1	0.95	-40 ⁰ c - 50 ⁰ c	10%-90%RH	IP66

5050 LIGHT SOURCE

Ordering Code	Part Code	Description	Watts (W)	CRI	CCT* (K)	Input Voltage (VAC)	Frequency (Hz)	PF	LM/W	Lu-mens (lm)	Life (hrs)	Std Pack	Power Factor	Operating Temperature Range	Operating Humidity Range	IP Rating
RA3-15	500125011540001	Die cast Aluminium Street Light - LED	15	70	3000/4000/6500	100 - 277	50-60	0.95	130-150	2250	100,000	1	0.95	-40 ⁰ c - 50 ⁰ c	10%-90%RH	IP66
RA3-25	500125012540001	Die cast Aluminium Street Light - LED	25	70	3000/4000/6500	100 - 277	50-60	0.95	130-150	3750	100,000	1	0.95	-40 ⁰ c - 50 ⁰ c	10%-90%RH	IP66
RA3-35	500125013540001	Die cast Aluminium Street Light - LED	35	70	3000/4000/6500	100 - 277	50-60	0.95	130-150	5250	100,000	1	0.95	-40 ⁰ c - 50 ⁰ c	10%-90%RH	IP66
RA3-45	500125014540001	Die cast Aluminium Street Light - LED	45	70	3000/4000/6500	100 - 277	50-60	0.95	130-150	6750	100,000	1	0.95	-40 ⁰ c - 50 ⁰ c	10%-90%RH	IP66

5050 LIGHT SOURCE

Ordering Code	Part Code	Description	Watts (W)	CRI	CCT* (K)	Input Voltage (VAC)	Frequency (Hz)	PF	LM/W	Lu-mens (lm)	Life (hrs)	Std Pack	Power Factor	Operating Temperature Range	Operating Humidity Range	IP Rating
RA11-25	500126012540001	Die cast Aluminium Street Light - LED	25	70	3000/4000/6500	100 - 277	50-60	0.95	130-150	3750	100,000	1	0.95	-40 ⁰ c - 50 ⁰ c	10%-90%RH	IP66
RA11-35	500126013540001	Die cast Aluminium Street Light - LED	35	70	3000/4000/6500	100 - 277	50-60	0.95	130-150	5250	100,000	1	0.95	-40 ⁰ c - 50 ⁰ c	10%-90%RH	IP66
RA11-45	500126014540001	Die cast Aluminium Street Light - LED	45	70	3000/4000/6500	100 - 277	50-60	0.95	130-150	6750	100,000	1	0.95	-40 ⁰ c - 50 ⁰ c	10%-90%RH	IP66

ARROW MINI SERIES



Available in:

Features & Benefits



- Die cast aluminium body with separate LED module and control gear compartment.
- All control gears mounted on cover that can be detached for maintenance needs.
- RoHS Compliant
- LED module compartment covered by tempered glass IK 08 rating and provided with cooling Fins
- Cree/Philips/Osram/Samsung Chips with High lumen output per watt, high CRI, and CCT of 3000k , 4000k - 6500k or any other kelvin temperature required
- The Gear compartment designed for tool free
- All hardware used within the fixture are stainless steel to with stand corrosion
- Fixture designed to meet safety requirements in line with IEC 60598
- Luminous Efficacy > 130 – 150 Lm/ W
- Front covered by tempered glass
- Luminaire designed for tool free access to allow for ease of maintenance
- Provision
 - Of safety cut off switch when the luminaire is opened for any maintenance purposes
 - Of being compatible with NEMA socket for lighting management control
 - for 0 -10v Dimming
 - Of surge protection device
 - Of spirit level to ensure that the luminaire is mounted horizontal
 - Of pole mounting piece designed for horizontal or vertical mounting
- Certification: ENEC , UL / DLC, CB, CE, IK 08, IP66

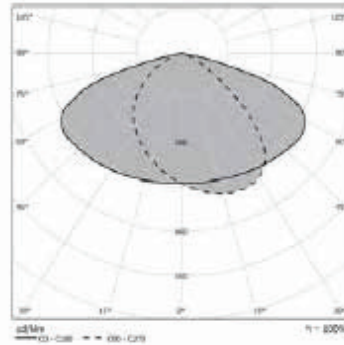
APPLICATIONS:

Branch road, urban road, rural road, parking etc.

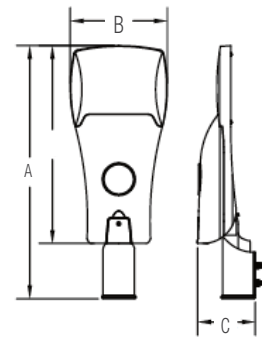




Light Distribution Curve



Dimension Diagram



Specification

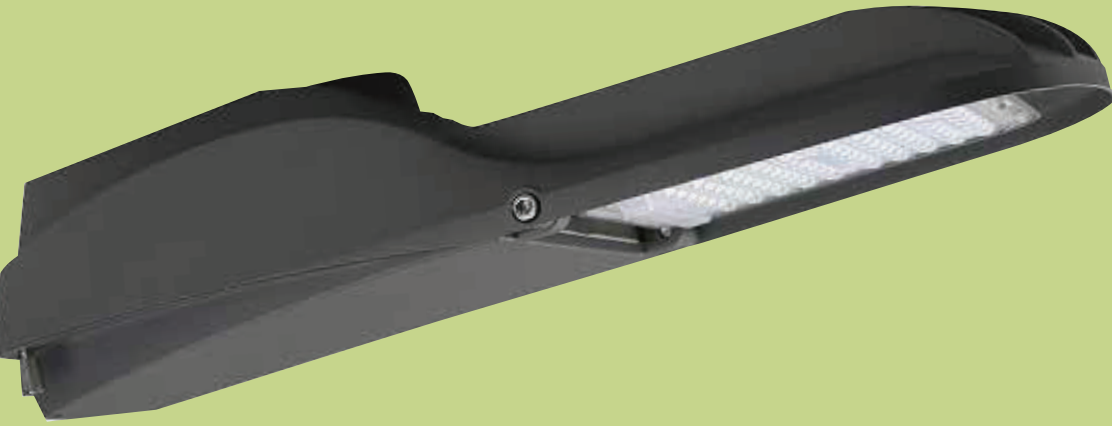
3030 LIGHT SOURCE

Ordering Code	Part Code	Description	Watts (W)	CRI	CCT* (K)	Input Voltage (VAC)	Fre-quency (Hz)	PF	LM/W	Lumens (lm)	Life (hrs)	Std Pack	Power Factor	Operating Temperature Range	Operating Humidity Range	IP Rating
RA5-60	500128016040001	Die cast Aluminium Street Light - LED	60	70	3000/4000/6500	100 - 277	50-60	0.95	130-150	9000	100,000	1	0.95	-40 ⁰ c - 50 ⁰ c	10%-90%RH	IP66
RA5-90	500128019040001	Die cast Aluminium Street Light - LED	90	70	3000/4000/6500	100 - 277	50-60	0.95	130-150	13500	100,000	1	0.95	-40 ⁰ c - 50 ⁰ c	10%-90%RH	IP66

5050 LIGHT SOURCE

Ordering Code	Part Code	Description	Watts (W)	CRI	CCT* (K)	Input Voltage (VAC)	Fre-quency (Hz)	PF	LM/W	Lumens (lm)	Life (hrs)	Std Pack	Power Factor	Operating Temperature Range	Operating Humidity Range	IP Rating
RA6-60	500129016040001	Die cast Aluminium Street Light - LED	60	70	3000/4000/6500	100 - 277	50-60	0.95	130-150	9000	100,000	1	0.95	-40 ⁰ c - 50 ⁰ c	10%-90%RH	IP66
RA6-90	500129019040001	Die cast Aluminium Street Light - LED	90	70	3000/4000/6500	100 - 277	50-60	0.95	130-150	13500	100,000	1	0.95	-40 ⁰ c - 50 ⁰ c	10%-90%RH	IP66
RA7-60	500130016040001	Die cast Aluminium Street Light - LED	60	70	3000/4000/6500	100 - 277	50-60	0.95	130-150	9000	100,000	1	0.95	-40 ⁰ c - 50 ⁰ c	10%-90%RH	IP66
RA7-90	500130019040001	Die cast Aluminium Street Light - LED	90	70	3000/4000/6500	100 - 277	50-60	0.95	130-150	13500	100,000	1	0.95	-40 ⁰ c - 50 ⁰ c	10%-90%RH	IP66

ARROW **MIDI SERIES**



Available in:



Features & Benefits

120W



36W



54W



- Die cast aluminium body with separate LED module and control gear compartment.
- All control gears mounted on cover that can be detached for maintenance needs.
- RoHS Compliant
- LED module compartment covered by tempered glass IK 08 rating and provided with cooling Fins
- Cree/Philips/Osram/Samsung Chips with High lumen output per watt, high CRI, and CCT of 3000k , 4000k - 6500k or any other kelvin temperature required
- The Gear compartment designed for tool free
- All hardware used within the fixture are stainless steel to with stand corrosion
- Fixture designed to meet safety requirements in line with IEC 60598
- Luminous Efficacy > 130 – 150 Lm/ W
- Front covered by tempered glass
- Luminaire designed for tool free access to allow for ease of maintenance
- Provision
 - Of safety cut off switch when the luminaire is opened for any maintenance purposes
 - Of being compatible with NEMA socket for lighting management control
 - for 0 -10v Dimming
 - Of surge protection device
 - Of spirit level to ensure that the luminaire is mounted horizontal
 - Of pole mounting piece designed for horizontal or vertical mounting
- Certification: ENEC , UL / DLC, CB, CE, IK 08, IP66

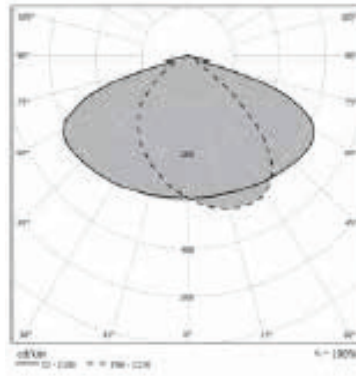
APPLICATIONS:

Branch road, urban road, rural road, parking etc.

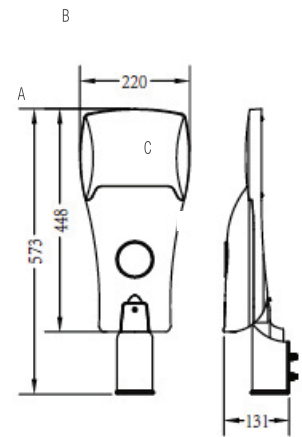




Light Distribution Curve



Dimension Diagram



Specification

3030 LIGHT SOURCE | 120 LED PCS

Ordering Code	Part Code	Description	Watts (W)	CRI	CCT* (K)	Input Voltage (VAC)	Frequency (Hz)	PF	LM/W	Lumens (lm)	Life (hrs)	Std Pack	Power Factor	Operating Temperature Range	Operating Humidity Range	IP Rating
RA1-120	500127011240001	Die cast Aluminium Street Light - LED	120	70	3000/4000/6500	100 - 277	50-60	0.95	130-150	18000	100,000	1	0.95	-40 ⁰ c - 50 ⁰ c	10%-90%RH	IP66

5050 LIGHT SOURCE | 36 LED PCS

Ordering Code	Part Code	Description	Watts (W)	CRI	CCT* (K)	Input Voltage (VAC)	Frequency (Hz)	PF	LM/W	Lumens (lm)	Life (hrs)	Std Pack	Power Factor	Operating Temperature Range	Operating Humidity Range	IP Rating
RA1-36	500127013640001	Die cast Aluminium Street Light - LED	36	70	3000/4000/6500	100 - 277	50-60	0.95	130-150	5400	100,000	1	0.95	-40 ⁰ c - 50 ⁰ c	10%-90%RH	IP66

5050 LIGHT SOURCE | 54 LED PCS

Ordering Code	Part Code	Description	Watts (W)	CRI	CCT* (K)	Input Voltage (VAC)	Frequency (Hz)	PF	LM/W	Lumens (lm)	Life (hrs)	Std Pack	Power Factor	Operating Temperature Range	Operating Humidity Range	IP Rating
RA1-54	500127015440001	Die cast Aluminium Street Light - LED	54	70	3000/4000/6500	100 - 277	50-60	0.95	130-150	8100	100,000	1	0.95	-40 ⁰ c - 50 ⁰ c	10%-90%RH	IP66